



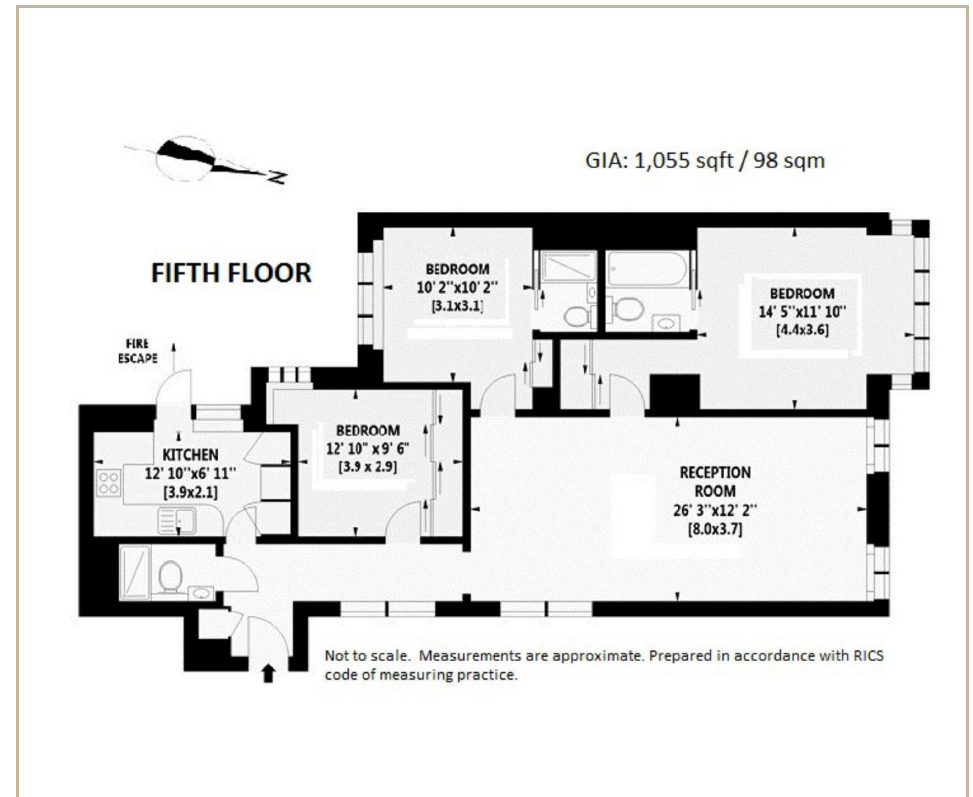
BARRIE HOUSE
HYDE PARK, W2
£5,525 Per Month

T. +44 (0) 20 7935 0011
E. enquire@napierwatt.co.uk
WWW.NAPIERWATT.CO.UK

NAPIER WATT
PROPERTY CONSULTANTS

Description

A stunning three bedroom apartment with portorage. Situated on the fifth floor of a purpose built block opposite Hyde Park and occupying approximately 1,055 sqft / 98sqm. Offering a 26" reception room, separate kitchen, two ensuite bedrooms, a third bedroom and bathroom. Complete with luxury furniture and fitted wardrobes.



TERMS

Fees & Charges: Tenancies exceeding £100,000 Per annum £480 inc VAT, Tenancies where a company is a tenant £480 inc VAT.

For Clarification we wish to inform prospective purchasers that we have prepared these sales particulars as a general guide. We have not carried out a survey, nor tested the services, appliances and specific fittings. Room sizes are approximate and rounded: they are taken between internal wall surfaces and therefore include cupboards/shelves, etc. Accordingly, they should not be relied upon for carpets and furnishings. Formal notice is given that all fixtures and fittings, carpeting, curtains/blinds and kitchen equipment, whether fitted or not, are deemed to be removable by the vendor unless specifically itemised within these sales particulars.

T. +44 (0) 20 7935 0011
E. enquire@napierwatt.co.uk
WWW.NAPIERWATT.CO.UK

NAPIER WATT
PROPERTY CONSULTANTS